



Fall

Dress for Success

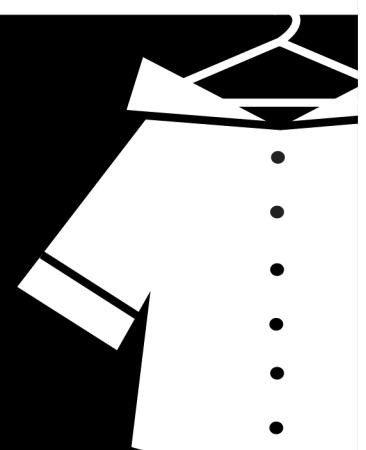
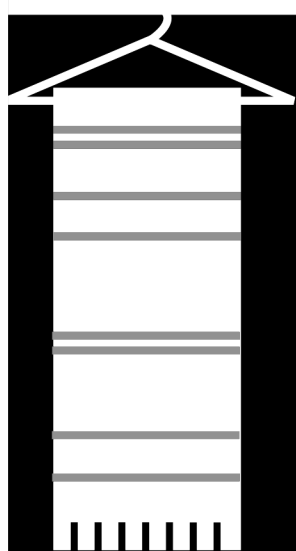
Donation Drive

Donate your gently used, nearly-new professional attire

When: Every other Friday, 10/19, 11/2, 11/16 and 11/30

Where: Highline Community Pantry

Drop off Time: 10am – 11am (Please bring your donation only during drop off times.)



Clothing Accepted

- Critical need: Plus sized clothing (20+)
- Critical need: New, unused pantyhose, leggings, socks, shapewear like Spanx
- Designer clothes, accessories and handbags
- New suits in all sizes (purchased within the past 3 years)
- Shoes in excellent condition
- All kinds of jewelry
- Handbags, wallets, computer bags
- Rain jackets and winter coats
- Scarves, gloves, hats, umbrellas, sunglasses and readers

- New, Unused, Full-Sized TOILETRIES AND COSMETICS, including:
 - Shampoo and conditioner
 - Body soap
 - Body lotion
 - Deodorant
 - Hair care products
 - Toothbrushes, toothpaste, mouthwash
 - Lipstick, mascara, eye-liner, foundation, blush
- Tampons and maxi pads in unopened packages

Clothing NOT Accepted

- Stained, pilly, torn, snagged or missing buttons
- Used pantyhose, socks or
- Travel/sample sized or used cosmetics and toiletries
- Men's clothing
- Clothing more than 10 years old (although we will consider vintage items 30 years or older)
- Scuffed or overly worn shoes

